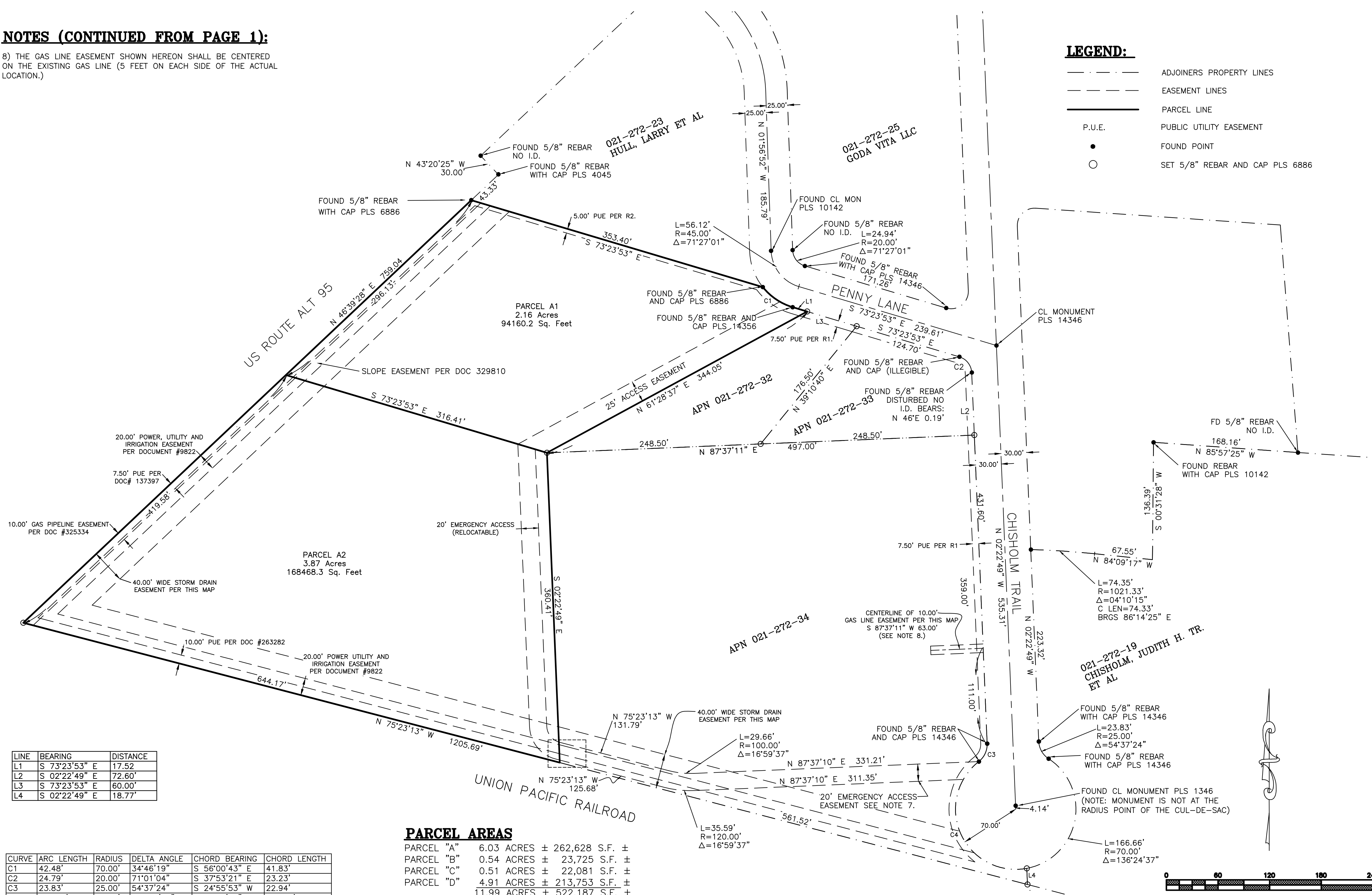


NOTES (CONTINUED FROM PAGE 1):

8) THE GAS LINE EASEMENT SHOWN HEREON SHALL BE CENTERED ON THE EXISTING GAS LINE (5 FEET ON EACH SIDE OF THE ACTUAL LOCATION.)

LEGEND:

- ADJOINERS PROPERTY LINES
- - - EASEMENT LINES
- PARCEL LINE
- - - P.U.E.
- FOUND POINT
- SET 5/8" REBAR AND CAP PLS 6886

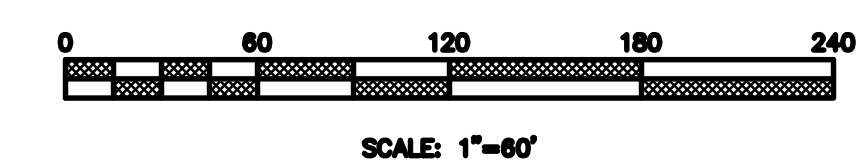
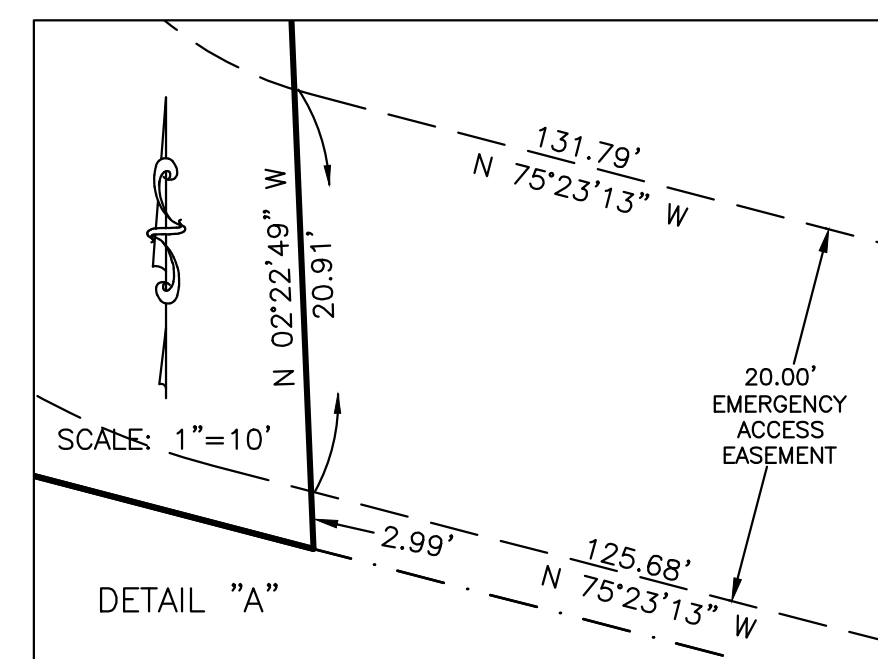


LINE	BEARING	DISTANCE
L1	S 73°23'53" E	17.52
L2	S 02°22'49" E	72.80
L3	S 73°23'53" E	60.00
L4	S 02°22'49" E	18.77

CURVE	ARC LENGTH	RADIUS	DELTA ANGLE	CHORD BEARING	CHORD LENGTH
C1	42.48'	70.00'	34°46'19"	S 56°00'43" E	41.83'
C2	24.79'	20.00'	71°01'04"	S 37°53'21" E	23.23'
C3	23.83'	25.00'	54°37'24"	S 24°55'53" W	22.94'
C4	186.73'	70.00'	152°50'12"	S 24°10'31" E	136.09'

PARCEL AREAS

- PARCEL "A" 6.03 ACRES ± 262,628 S.F. ±
- PARCEL "B" 0.54 ACRES ± 23,725 S.F. ±
- PARCEL "C" 0.51 ACRES ± 22,081 S.F. ±
- PARCEL "D" 4.91 ACRES ± 213,753 S.F. ±
- 11.99 ACRES ± 522,187 S.F. ±



TENTATIVE

2ND PARCEL MAP FOR CHARLES C. CHISHOLM TRUST

PARCEL "A" OF PARCEL MAP FOR JUDY CHISHOLM, FILE NUMBER 495350 BEING A PORTION OF THE NORTHWEST 1/4 OF SECTION 18, TOWNSHIP 20 NORTH, RANGE 25 EAST, M.D.M.

PERNLEY, LYON COUNTY, NEVADA
SIERRA SURVEYING, INC.
 555 HOLCOMB AVENUE
 RENO, NEVADA 89502
 TELEPHONE: (775) 828-5004 FAX: (775) 337-0313

JOB NO.: 2001774
 DESIGNED BY: CDC
 DRAWN BY: CDC
 CHECKED BY: CDC
 DATE: 03-09-2017
 SHEET 2 OF 2