

L:\Projects\2020\00 - FY 16/17 PMP Maintenance Project\Drawings\100000 - FY 16-17 PMP Maintenance\100000 - FY 16-17 PMP Maintenance.dwg
 02/20/2020 10:42 am



6222 PRIORITY DRIVE
 RENO, NEVADA 89501
 TEL: (775) 827-4111
 FAX: (775) 827-4122

WWW.LUMOSINC.COM

CIVIL ENGINEERING
 GEOTECHNICAL ENGINEERING
 PLANNING
 LANDSCAPE ARCHITECTURE
 SURVEYING / GIS
 CONSTRUCTION SERVICES
 MATERIALS TESTING

CITY OF FERNLEY

FY 16/17 PMP

MAINTENANCE PROJECT
 SLURRY AND STRIPING SHEET INDEX

LYON COUNTY, NEVADA

CITY OF FERNLEY

REV.	DATE	DESCRIPTION	BY

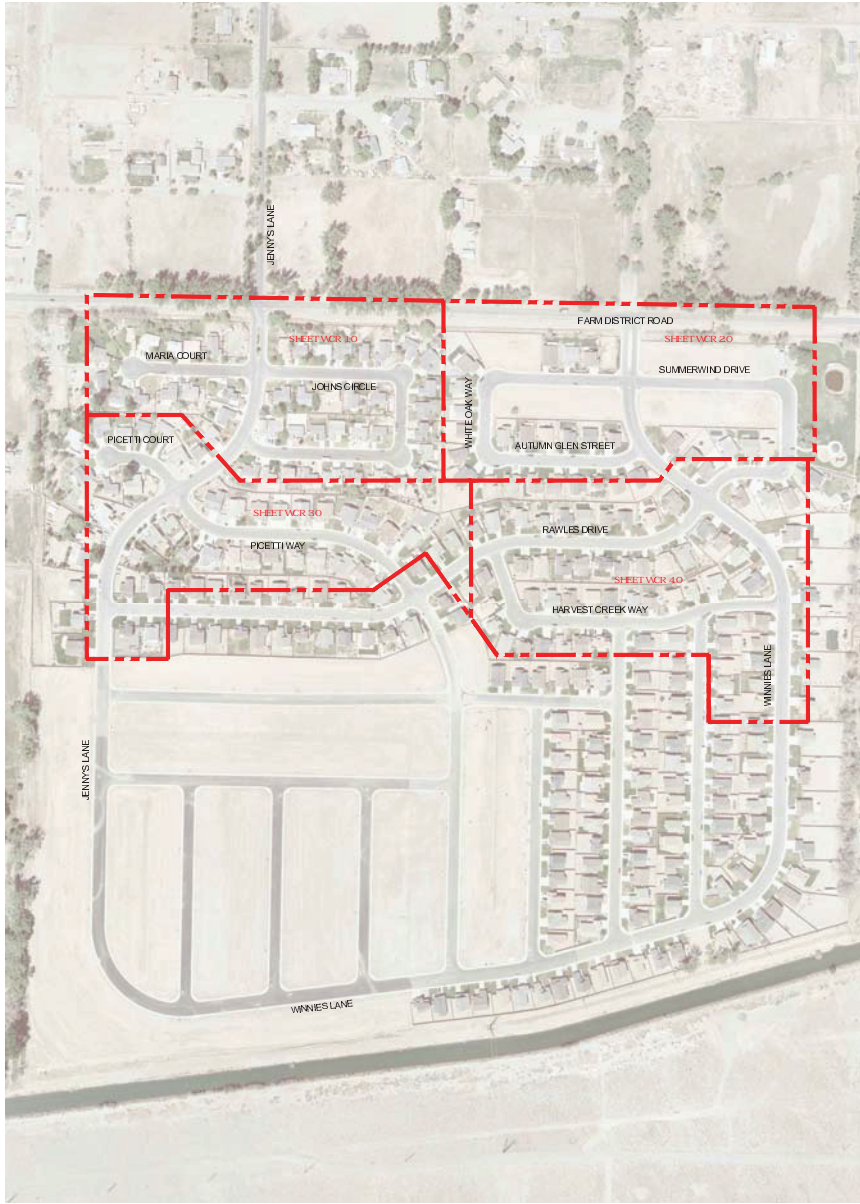
100% SUBMITTAL

C2.0

DATE: MARCH 2017
 DRAWN BY: RHH
 DESIGNED BY: BDM
 CHECKED BY: SCM
 JOB NO.: 9132.000

LOCATION AND AREA OF FEATURES DEPICTED ARE APPROXIMATE AND ARE FOR ESTIMATION PURPOSES ONLY

U:\Projects\2016\02\000 - FY 16-17 PMP Maintenance Project\Drawings\100000 FY 16-17 CRACK SEALING.C2.2
 03/29/2017 10:14 am fhdmg



PONDEROSA SUBDIVISION



COUNTRY RANCH SUBDIVISION



6222 PHOENIXTYPE DRIVE
 RENO, NEVADA 89511
 TEL (775) 827-6111
 FAX (775) 827-6122

WWW.LUMOSINC.COM

CIVIL ENGINEERING
 GEOTECHNICAL ENGINEERING
 PLANNING
 LANDSCAPE ARCHITECTURE
 SURVEYING / GIS
 CONSTRUCTION SERVICES
 MATERIALS TESTING

CITY OF FERNLEY

FY 16/17 PMP
 MAINTENANCE PROJECT
 WIDE CRACK REPAIR SHEET INDEX

LYON COUNTY NEVADA
 CITY OF FERNLEY

BY
 DESCRIPTION

REV. DATE

DATE: MARCH 2017
 DRAWN BY: RHH
 DESIGNED BY: BDM
 CHECKED BY: SSM
 JOB NO.: 9132.000

100% SUBMITTAL

C2.2

LOCATION AND AREA OF FEATURES DEPICTED ARE APPROXIMATE AND ARE FOR ESTIMATION PURPOSES ONLY