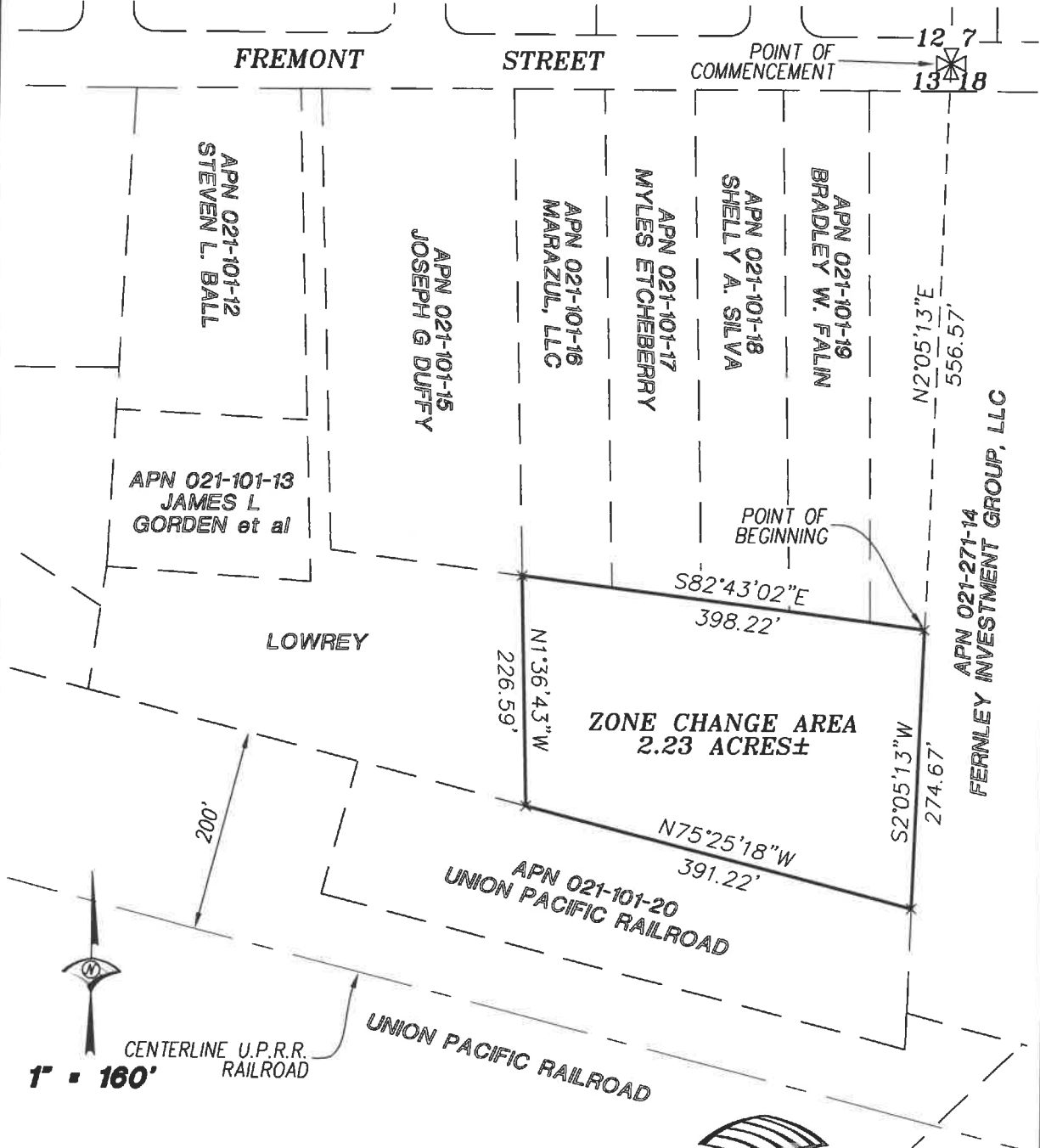


EXHIBIT A-1

PLAT TO ACCOMPANY

ZONE CHANGE

BEING A PORTION OF THE NE 1/4 OF SECTION 13,
TOWNSHIP 20 NORTH, RANGE 24 EAST, M.D.M. &
THE NW 1/4 OF SECTION 18,
TOWNSHIP 20 NORTH, RANGE 25 EAST, M.D.M.
FERNLEY LYON COUNTY NEVADA



JOB NO. 3034040
SHEET 1 OF 1

WOOD RODGERS
BUILDING RELATIONSHIPS ONE PROJECT AT A TIME

1361 Corporate Blvd
Reno, NV 89502
Tel 775.823.4068
Fax 775.823.4066

