

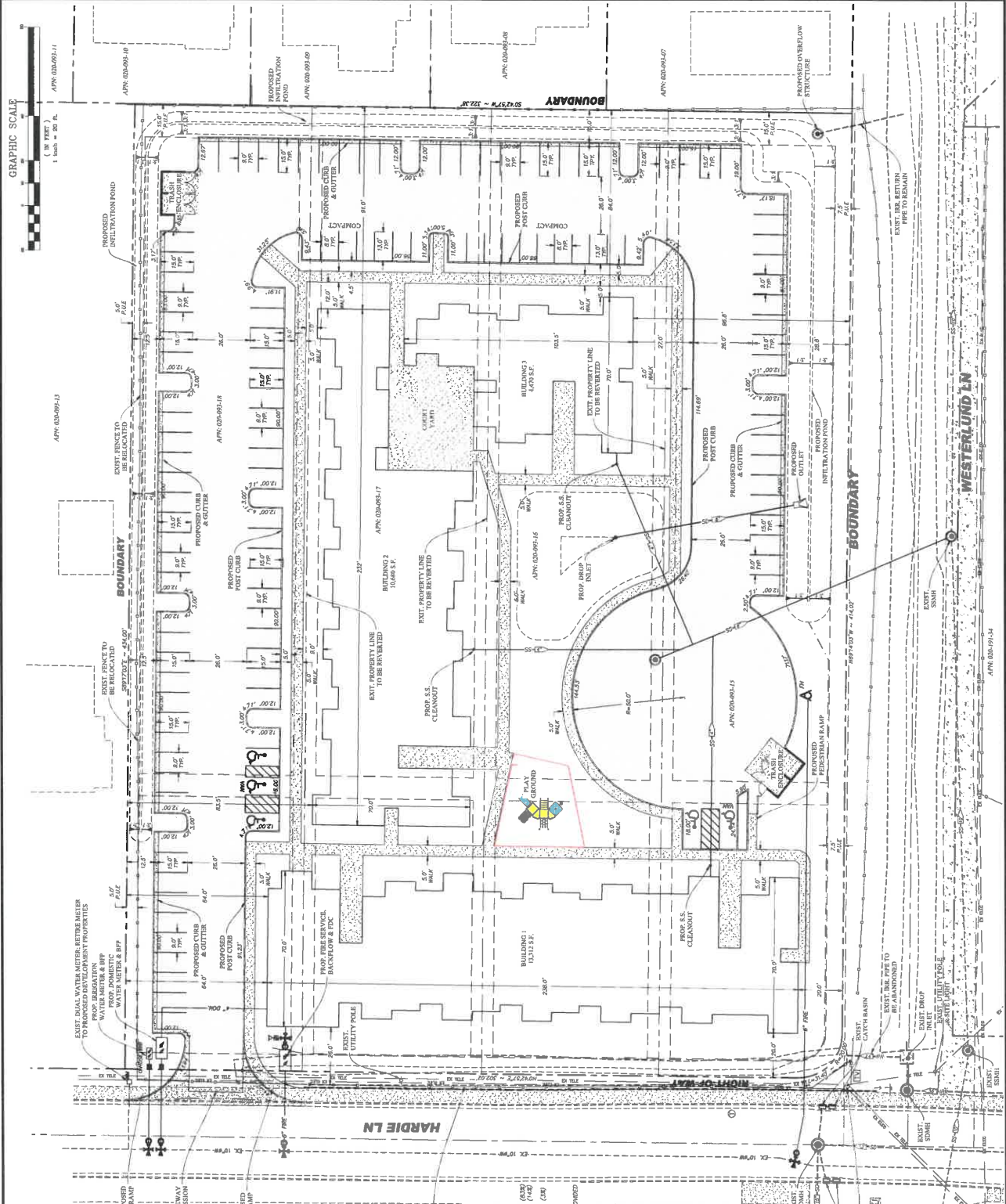
REV.	DATE	DESCRIPTION	BY	APP'D.
07-27-20				

DESIGNED BY: **KADAROG**
 DRAWN BY: **KADAROG**
 CHECKED BY: **G.S.T.**
 DATE: **07-27-20**

HARDIE LANE
PRELIMINARY SITE & UTILITY PLAN
 CONDITIONAL USE PERMIT
 PERMITS DIVISION
 LYON COUNTY, NEVADA

APR. 020-090-16
 APR. 020-090-17
 APR. 020-090-18
 APR. 020-090-19
 APR. 020-090-20
 APR. 020-090-21
 APR. 020-090-22
 APR. 020-090-23
 APR. 020-090-24

1" = 40' (GRAPHIC SCALE)
 1" = 40' (GRAPHIC SCALE)
 1" = 40' (GRAPHIC SCALE)



LEGEND:
 A.C. PAVING AREA
 CONCRETE AREA
 ASP. BASE AREA
 ROCK IMP. ASP. AREA
 MANGLE
 CATCH BASIN
 STORM DRAIN OUTLET
 STORM DRAIN
 SLOPE (DARKER IF FACING)
 SANDWICH SIGN (Hatched)
 SANDWICH SIGN (Lateral)
 SANDWICH SIGN (Vertical)
 SANDWICH SIGN (Diagonal)
 SANDWICH SIGN (Horizontal)
 SANDWICH SIGN (Vertical)
 SANDWICH SIGN (Horizontal)
 SANDWICH SIGN (Diagonal)
 SANDWICH SIGN (Horizontal)

SITE INFORMATION:
 527 HARDIE LANE PERMITS, NV BRD
 APR. 020-090-16
 APR. 020-090-17
 APR. 020-090-18
 APR. 020-090-19
 APR. 020-090-20
 APR. 020-090-21
 APR. 020-090-22
 APR. 020-090-23
 APR. 020-090-24

REQUIRED PARKING:
 24 (ONE BEHIND EACH UNIT) (1.5 SPACES)
 48 SPACES REQUIRED
 120 SPACES REQUIRED
 150 SPACES REQUIRED

ESTIMATED PARKING:
 105 SPACES PROVIDED
 135 SPACES PROVIDED
 150 SPACES PROVIDED

ADDITIONAL PARKING SPACES PROVIDED:
 10 CAR SPACES
 13 SPACES REQUIRED
 13 SPACES TO BE PROVIDED

FLOOD ZONE NOTE:
 FROM FEMA MAP NO. 13090010001E, DATED JANUARY 16, 2009
 FLOOD ZONE X
 FLOOD ZONE X

BASIS OF BEARING:
 BASED ON THE NEVADA BEST COORDINATE SYSTEM OF 1983
 (NAD 83) WITH A GRID TO GROUND FACTOR OF 1.00027

BASIS OF ELEVATION:
 BASED ON NORTH AMERICAN VERTICAL DATUM OF 1988
 (NAVD 88) WITH A GRID TO GROUND FACTOR OF 1.00027
 CONTAINS NO VERTICAL CURVES AND NO TYPICAL ELEVATION
 OF 400.00 FT.

ESTIMATED FIRE FLOW:
 2,125 gpm FOR 2 HOURS

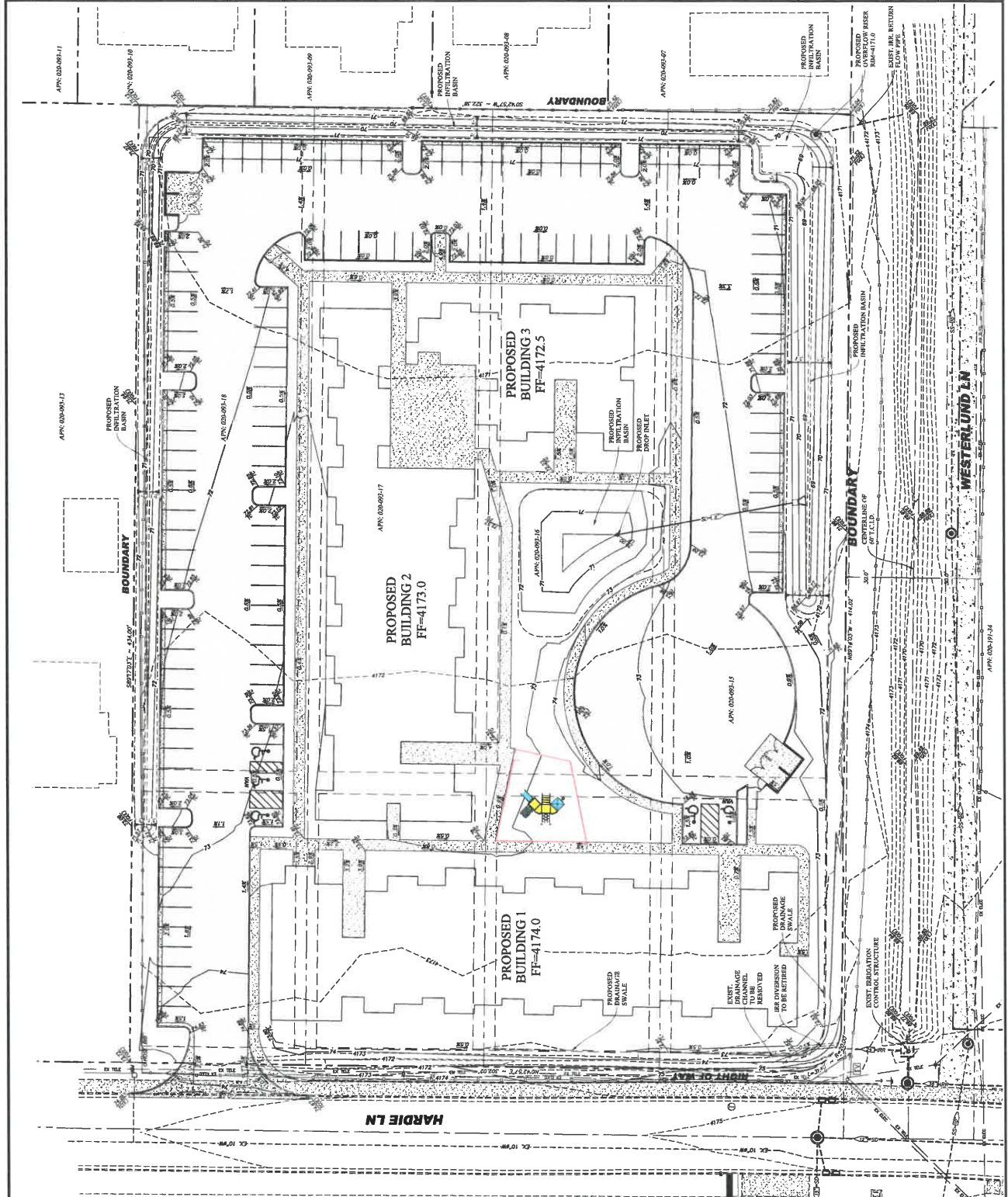
3
 S-1
 SHEET

DATE	07-27-20
DRAWN BY	ADP/BJD
CHECKED BY	G.S.M.
DESIGNED BY	G.S.M.
G.S.M.	

HARDIE LANE
 CONDITIONAL USE PERMIT
 PRELIMINARY GRADING PLAN
 LYON COUNTY, NEVADA
 FERNLEY

dysssey INCORPORATED
 885 ROBERTA LANE, SUITE 104, SPARKS, NV 89434
 (775) 358-1300 FAX (775) 358-2329
 CIVIL ENGINEERING
 LICENSE NO. 15858

PROFESSIONAL ENGINEER
 STATE OF NEVADA
 CIVIL
 EX-00022
 CAROL S. WITLER
 SCALE: 1" = 40' 0"
 SHEET: G-1
 OF: 3



- LEGEND:**
- EXISTING A.C. PARKING AREA
 - A.C. PARKING AREA
 - EXISTING CONCRETE AREA
 - CONCRETE AREA
 - EXISTING CURB
 - CATCH BASIN
 - STORM DRAIN MARK (DASHED IF EXISTING)
 - MANHOLE (DASHED IF EXISTING)
 - GRADE BREAK
 - EXISTING
 - SLOPE IN PERCENT
 - ELEVATION & FINISH GRADE
 - ELEVATION @ TOP OF CURB
 - ELEVATION @ GRADE BREAK
 - ELEVATION @ FLOW LINE
 - ELEVATION @ TOP OF WALL

FLOODZONE NOTE:
 BASED ON THE NEVADA BEST COORDINATE SYSTEM OF 1983
 ASSUMES THE SITE IS BEING DEVELOPED IN AN UNDEVELOPED
 FLOOD ZONE X.

BASIS OF BEARING:
 BASED ON THE NEVADA BEST COORDINATE SYSTEM OF 1983
 ASSUMES THE SITE IS BEING DEVELOPED IN AN UNDEVELOPED
 FLOOD ZONE X.

BASIS OF ELEVATION:
 BASED ON THE NEVADA BEST COORDINATE SYSTEM OF 1983
 (NAD 83) USING NEVADA DEPARTMENT OF TRANSPORTATION
 (DART) BENCHMARK NO. 1528686 WITH PROPOSED ELEVATION
 OF 4182.21 FT.

APR: 08R-1314-0
 1" = 40' 0"
 GRAPHIC SCALE
 1" = 40' 0"
 1" = 40' 0"

dysssey
 1" = 40' 0"
 1" = 40' 0"